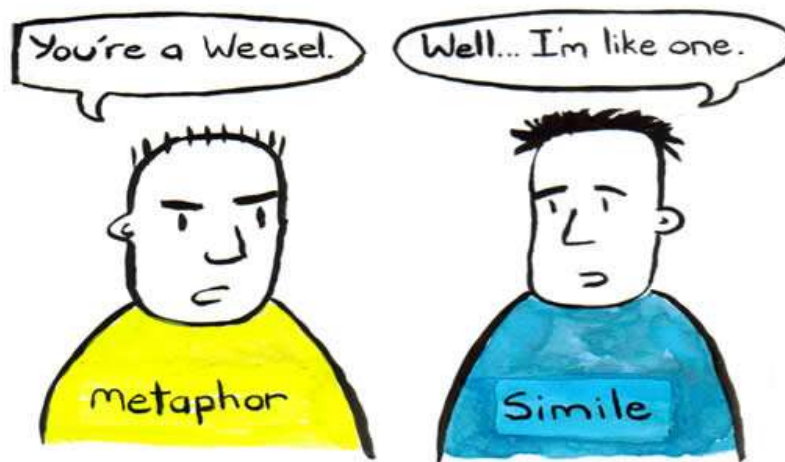


Supplemental images and narrative to
Is Your God Big Enough? Close Enough? You Enough?
Jesus and the Three Faces of God
by Paul Smith



CHAPTER 1
BEYOND "THE FATHER" TO
THE WONDER OF INFINITE BEING
(pages 31-46)

We use lots of metaphors and similes when referring to God:



These suggestive metaphors and similes mean that neither images nor words can be taken literally when speaking of God. We can only point to, suggest, and offer imaginative pictures that can help us to greater understanding, but never complete understanding. Keep this in mind when reading the words and looking at the images here.



GOD AS INFINITE BEING

God said to Moses, "Say, 'YHWH, the I AM, the God of your ancestors has sent me to you.' This is my name you are to remember for all generations." Exodus 3:15

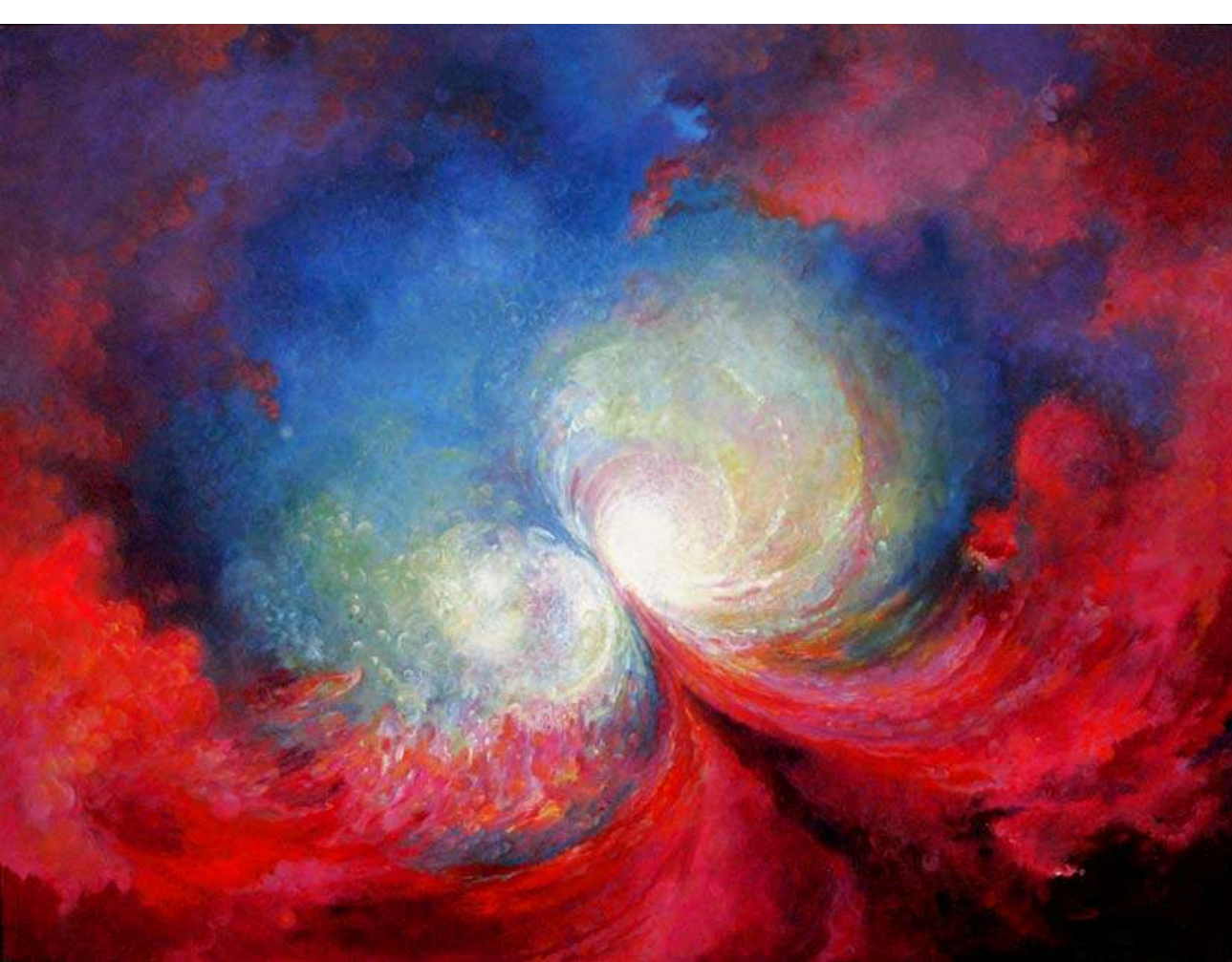
This can be most simply understood to mean that the God behind this burning bush and voice is not *a* being but is *being itself* or pure existence. Let's call this Face of God "Being Itself."

**God is
BEING ITSELF***

We are the
beings!



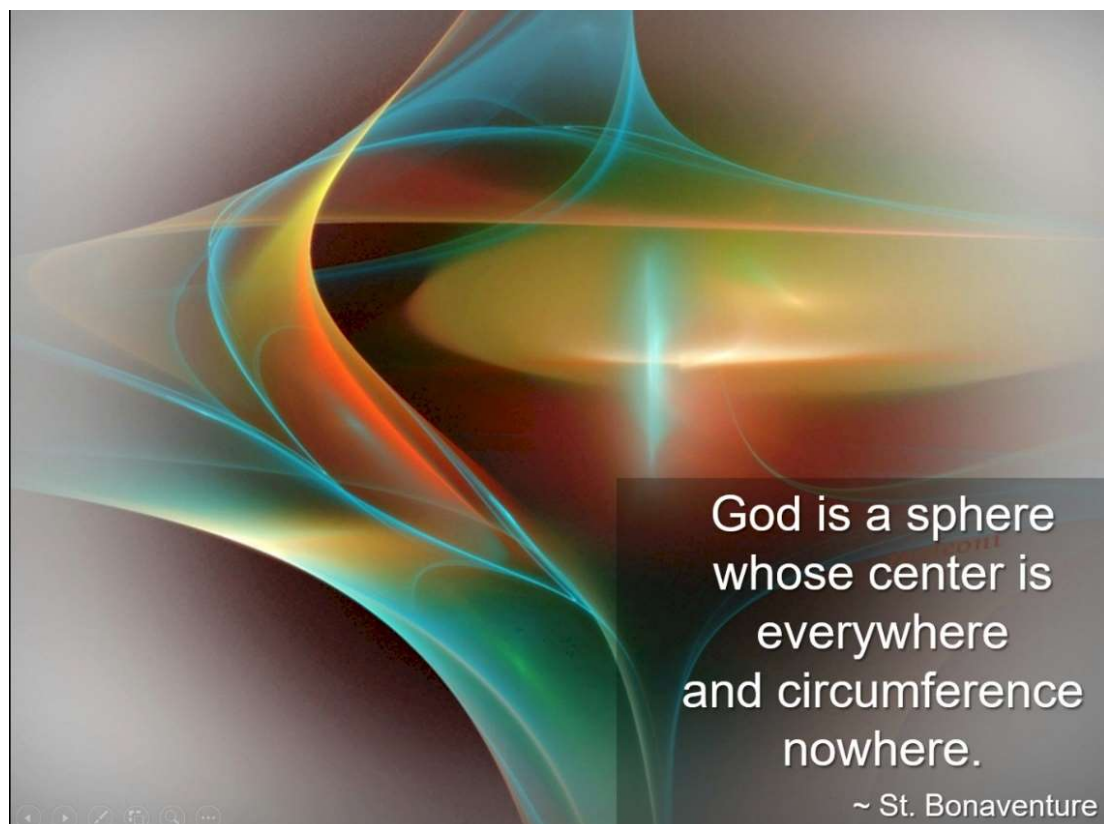
*St. Thomas Aquinas (1225–1274)
Major Catholic theologian



*God as
Mystery
Beyond Us*

Mysteries of
the Universe
by Rassouli
rassouli.com

Although we can't fully grasp this, we can try to use words and images that point us in the right direction. Here is one often quoted saying by the early leaders that can point us in the right direction.

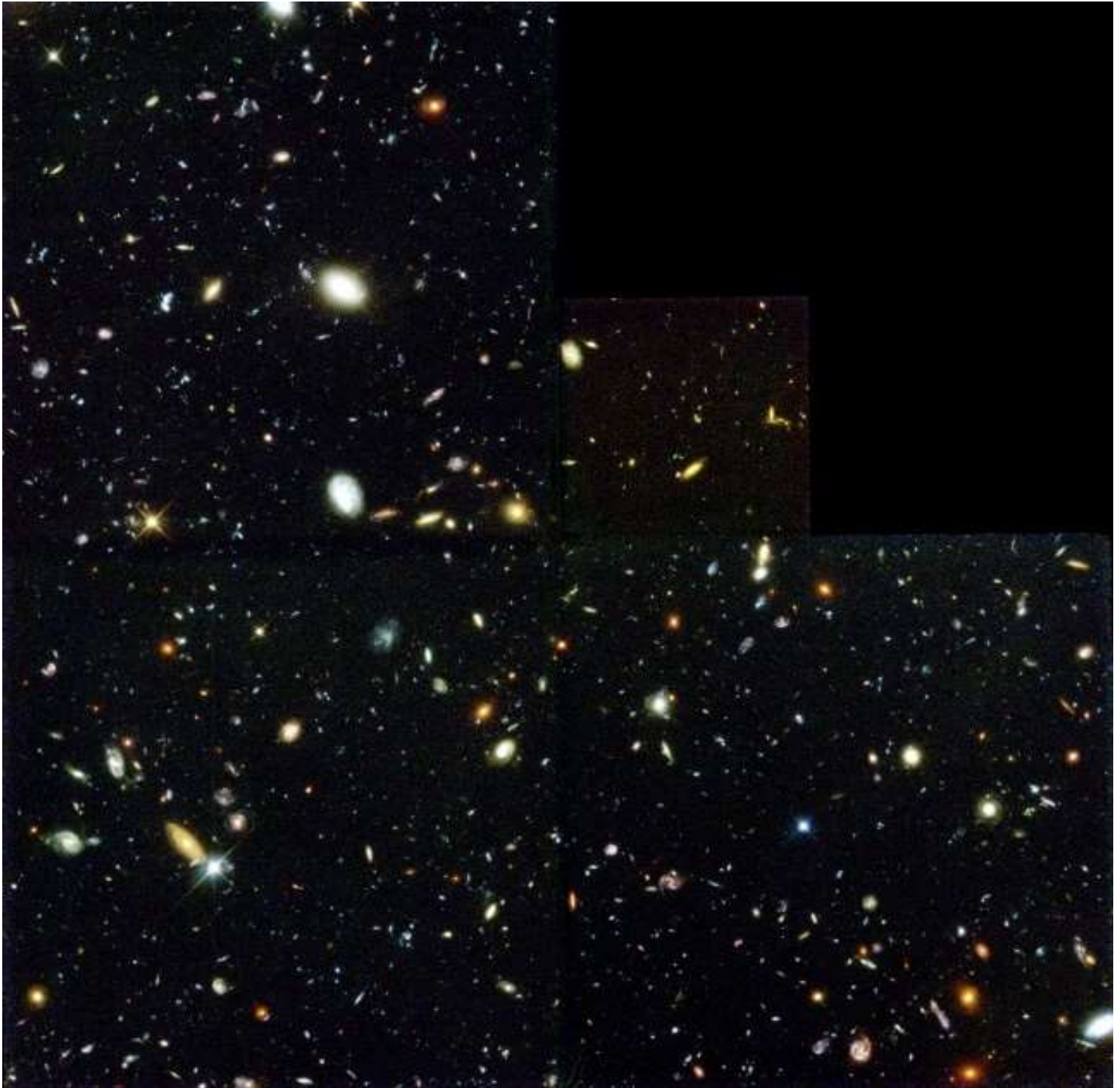


God is a sphere
whose center is
everywhere
and circumference
nowhere.

~ St. Bonaventure

The vastness of outer space can help us get a sense of the infinite

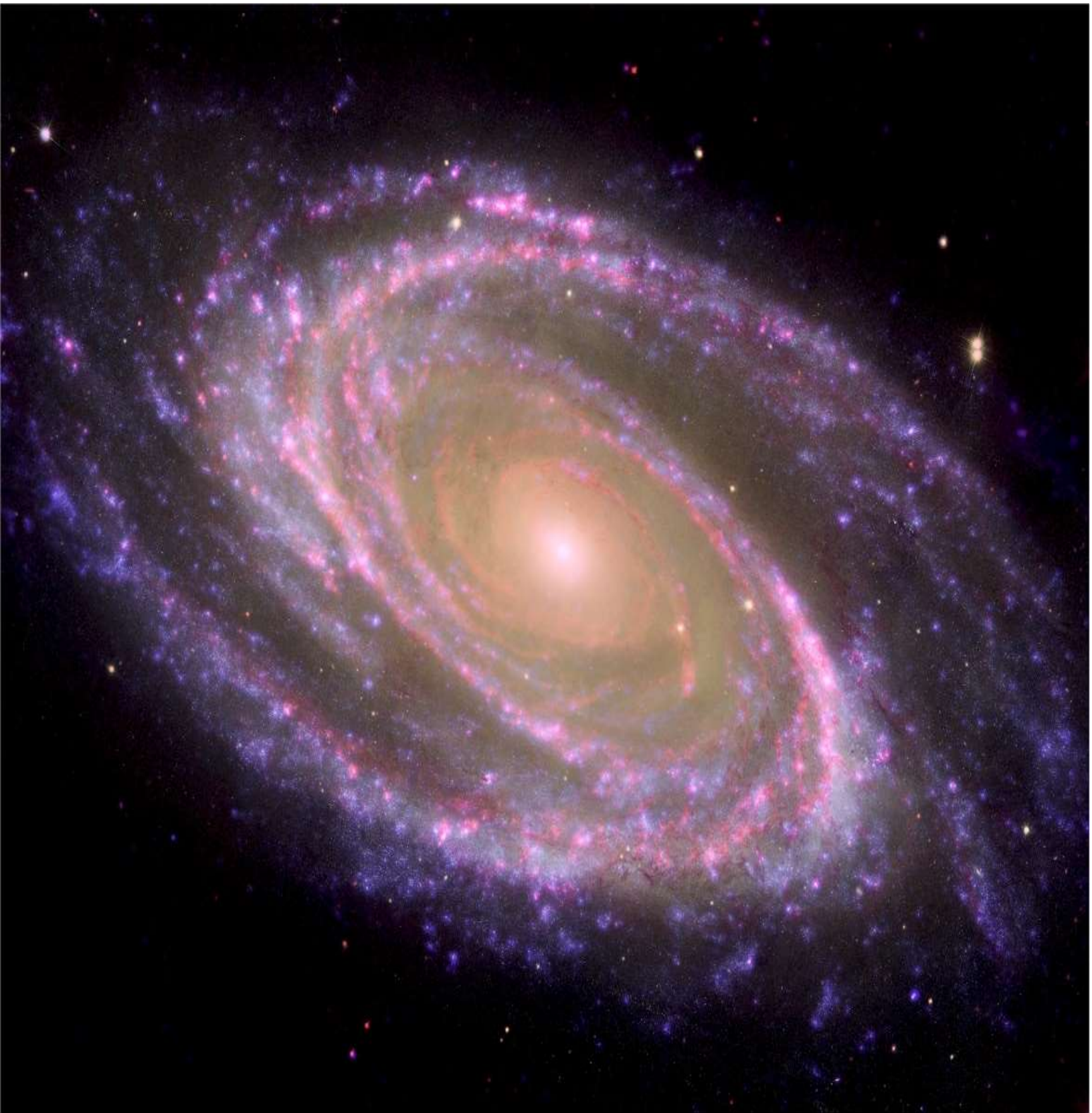
Here are six photographs of outer space from the Hubble Space Telescope. Take a moment to gaze at them and ponder the vastness of the universe.



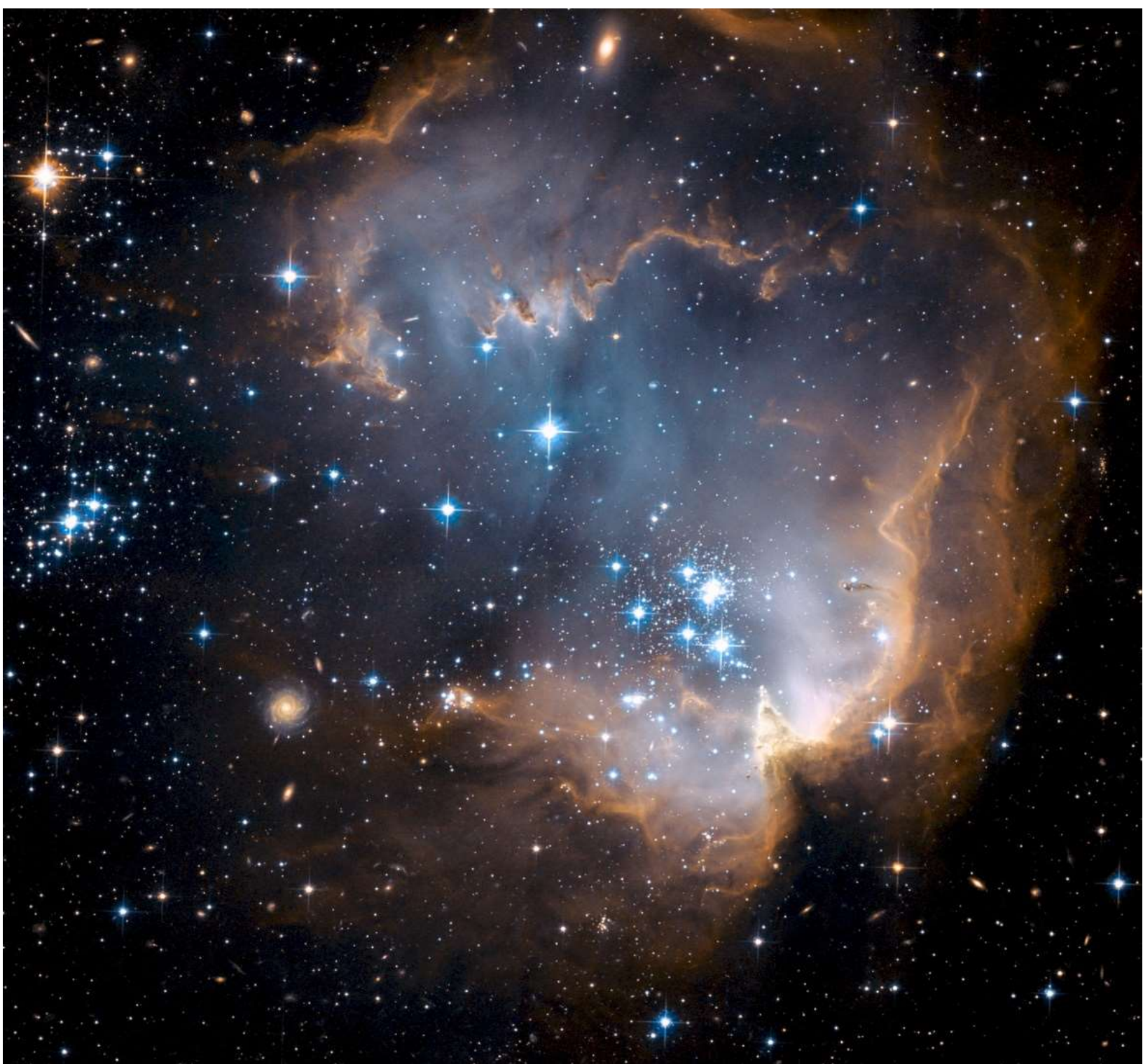
Hubble Deep Field Image

This unveils myriad galaxies back to the beginning of time. We are peering at the edge of the known universe.

Scientists speculate that the actual universe may not have an edge or boundary—that it is infinite.



The dusty, star-studded arms of a nearby spiral galaxy like our own.



Cosmic Fireworks

Westerlund 2 is a giant cluster of about 3000 stars located 20,000 light-years away in the constellation Carina. Hubble's near-infrared imaging camera pierces through the dusty veil enshrouding the stellar nursery, giving astronomers a clear view of the Dense concentration of stars in the central cluster



Galactic Waltz *The interplay of their gravitational forces bends two spiral galaxies, collectively known as Arp 273, as they approach and prepare to merge 300 million light-years away*

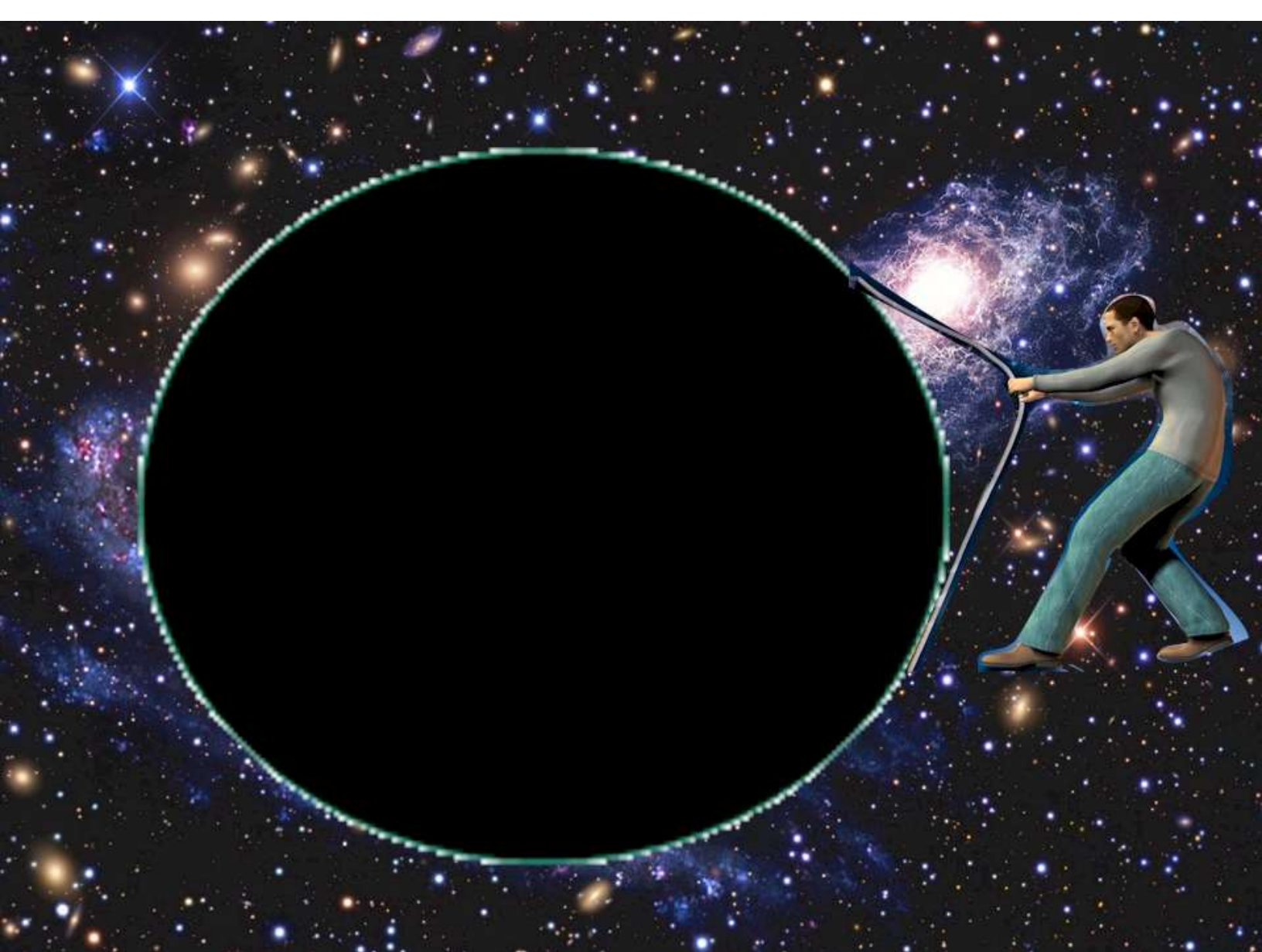


***Celestial Wings** Gas from a dying star resembles a butterfly, its lacy wings formed by the ejection of its outer layers.*



We know infinite space is not empty but filled with dark matter, galaxies and nebulae. So let's pull back space to think of empty, vast, infinite space as a metaphor for God as Infinite Being Itself. God as Infinite Being is the source of All and holds All.





This Infinite Face of God
moves us beyond
“God the Father”

God the Father by Cima da Conegliano, 1515

And even past our first seeker’s questioning response to
“Where is God?” — that of “*It’s beyond me.*” to



The Wonder of Infinite Being!!!
Existence Itself as The Infinite Face of God Beyond Us



Our response can also move from
“Who knows? It’s beyond me.”



TO THE AWESOME MYSTERY AND WONDER OF



Infinite Being Beyond Us!

