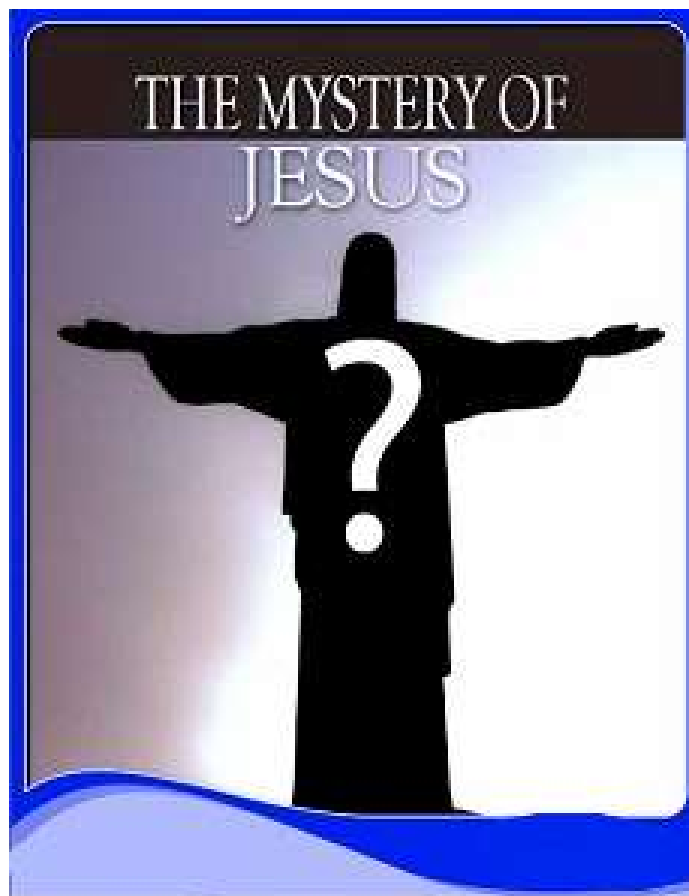


Supplemental images and narrative to
Is Your God Big Enough? Close Enough? You Enough?
Jesus and the Three Faces of God
by Paul Smith



CHAPTER 2

Beyond “the Son” to the Glory of the Cosmic Christ
(pages 47-68)



The meaning of “Messiah” was interpreted in various way in Jesus’ day

Jesus is the historical person. Christ (Greek for Messiah) is a title given to him. The Jewish teachers in Jesus’ day saw the “Messiah” as the one who would bring liberation to the Jews. However, they interpreted what that meant in various ways.

Jesus framed the meaning Messiah quite differently

from all the popular expectations. He saw himself speaking and acting on behalf of God to bring a new, higher realm of consciousness that would result in love, justice, and oneness



of

The historical Jesus in his physical body



becomes the Risen Jesus in his spiritual body after his death and resurrection .



Emmaus by Janet Gerloff

Jesus, in his spiritual body, appears, disappears, transforms—
now without limitation of time or space.

With Paul, the Christ (Messiah) becomes the Cosmic Christ

After the resurrection, the meaning of “Messiah” or “Christ” leaves the idea of Jewish Messiah and is revealed as the Cosmic Christ in the apostle Paul’s brilliant descriptions. Now it is uncovered that which has always been true—the eternal “Christ” is the Christian symbol for everything that has ever existed or happened.

Jesus is seen physically leaving the earth but we know he remains here with us. So this is a transition from the earthly Jesus of the Gospels to the Cosmic Christ that Jesus revealed to the Apostle Paul. Paul says it was Jesus himself who gave him these further revelations and visions that opened Paul to the awesome portraits he paints in his letters of the Cosmic Christ.



Ascension by [John Singleton Copley](#) (1775)

Here is a traditional rendering of the ascension of Jesus from earth to heaven.



This contemporary surrealistic painting of **The Ascension by George Gric (2005)** still retains its traditional imagery but is interpreted by Gric in a more evolved way. He writes:

“When Jesus went up to Heaven, he did not go to a far place. Heaven is where Jesus is. If Jesus is in you, the whole Heaven is in your heart, right now!, including the Father and the Holy Spirit, and the Blessed mother, and all the angels and saints. because where Jesus is, there is the Father and the Spirit, and where Jesus is, there is the Blessed Mother and all the angels and saints.”

Ascension by Salvador Dali moves toward transition from earth to cosmos.





The Ascension by Catherine Andrews beautifully captures more of this expansion from the earthly Jesus to the Cosmic Christ.

The challenge for the integral artist is to image the cosmic Christ as both **personal and transpersonal, Jesus and beyond Jesus, material and spiritual, divine and human, all-inclusive of divine, human, and material reality, and finally as beyond us, beside us, and being us.**



Which of the following images include more of these elements best for you?

Earthly Jesus to Cosmic Christ is imaged beautifully here by Sister Rebeca Shinas as the historical Jesus expanded into an infinity swirl of all creation.

THE COSMIC CHRIST



© Sister Rebecca Shinas, O.P. <https://sisterrebecca.carbonmade.com/>.

Christ is the Christian symbol for everything that has ever existed or happened held in seamless Oneness.



My interpretation of Rassouli's mystical image is as a feminine version of the Cosmic Christ with the transpersonal Cosmic Christ emerging from an infinite swirl.

Christ is the Christian symbol for everything that has ever existed or happened held in seamless Oneness.

**Cosmic Christ by
John Lenz**

Jesus is the personal
representation of the
transpersonal Christ.

They are connected
but not the same,

**Christ is the Christian symbol for everything that has ever
existed or happened held in seamless Oneness.**

Cone Nebulae Hubble Space Telescope, called the Jesus Nebulae by some



The Cosmic Christ Alex Grey

A four foot by eight and one half foot oil on wood painting with carved wood painted and gilded frame by Alex Grey in 1999-2000.

This is the most stunning, theologically insightful, and comprehensive image of the Cosmic Christ I have ever found.

(Alex Grey Posters may be ordered at <https://shop.cosm.org/collections/posters>)



Cosmic Christ by Alex Grey

AlexGrey.com

Alex Grey is a mystical, visionary artist. His painting here depicts over one hundred major happenings through history held together by the web of life that Christians call the Cosmic Christ.

The apostle Paul writes:

For in Christ all things in heaven and one earth were created, visible and invisible, rulers and powers. Before anything was created, Christ existed, and IN HIM ALL THINGS HOLD TOGETHER.

(Col. 1:16-17, caps mine)

From a vision in an altered state of consciousness, Grey painted the Cosmic Christ which is a profound imaging of the Christ of which Paul writes and whom *“in him all things hold together.”* Grey says his Cosmic Christ, “correlates images of the evolution of human consciousness.”

It begins at the bottom of the painting with the big bang, galaxies, and earth. The soul emerges from the murky waters of the unconscious. Christ represents the potential and the realization of super consciousness, the uplifting power of Spirit. Christ’s transfiguration and ascension moves to aviation and space travel. There are over 100 smaller images of humankind’s various endeavors in the golden grid that is the Christ who “holds all things together.”

In the heart of Cosmic Christ is the planet Earth. A longitude and latitude grid over Earth becomes a planetary crucifixion; everyone is nailed together in collective suffering. The planetary crucifixion transforms into a green Christ child, a planetary child, a green tree of life with all the plants and animals as one being. Not only does Christ transcend, but Christ is also in us, in everything and in every part of nature.

Grey’s Cosmic Christ pictures this beautifully as the golden web of life that is Christ flows out and around and through all things, holding them together. There is no action or idea that ever occurs without having been the product in some way of previous reactions. All things work in patterns to create new things and in that process, destroy old things.

Notice that Paul does not say that Jesus does this, but Christ. Christ is not Jesus’ last name. It began as description of him as an “anointed one” and evolved in Paul’s brilliant writings. Christ is now the Christian symbol for everything—all of reality in one seamless web of life. Jesus is the person in whom the vast Christ Consciousness resided in a most profound way. As a prototype for the new humanity, Jesus showed us what it was like to be a Christ. We all have that capacity and can, again in Paul’s words, “put on the mind of Christ”, or awaken to this Oneness or Christ consciousness, becoming one with the web of life itself.

Below the painting, on the frame, it reads:

You can never be lost.
When have you ever been apart from me?
You can never depart and never return.
For we are continuous, indistinguishable

Art comes from the level of consciousness of the artist. What we see or experience in viewing art also depends on our level of consciousness in receiving that artist's intent. Some art is simply the picturing the physical dimension. Other art sends emotional and symbolic signals that move us. The rarest form of art is visionary art that depicts and elicits in viewers an experience of going beyond the merely physical to higher spiritual states.

Sensitive viewing of visionary art can induce an altered state of consciousness and help move us not only to an altered state but help push us to the next stage of spiritual development.

To see the details of Alex Gre's Cosmic Christ, enlarge the picture on your screen.

Richard Rohr writes:

The Universal Christ, described by the Apostle Paul, is not a problem-solving Christ, not a denominational or cultural Christ, not a Christ domesticated by the churches, but the One who names in his life and person what matters, what lasts, and finally what is. He holds it all together in significance, reveals the redemptive pattern that we call the life and death of things, and holds the meaning and value of our lives outside of ourselves (see Colossians 1, Ephesians 1, John 1). Because Christians no longer "worship" such a Christ, we are condemned to worship smaller gods and to build our lives around smaller stories, none of which are big enough or real enough to give universal order and meaning. We look to the private psyche, but it is just not connected enough to encompass human spiritual longing. Christianity's efforts at evangelization will remain trapped in culture and fundamentalism until we ourselves are large enough to proclaim a cosmic notion of Christ.

(Richard Rohr, *Near Occasions of Grace*, Orbis Books: 1993, 19-20)

Christ is the Christian symbol for everything that has ever existed or happened held in seamless Oneness.



Cosmic Christ by Annett Hanrahan, RSCJ



SILENCE

The phrase “Cosmic Christ” refers to Christ who is continually incarnated in all creation held in seamless Unity.

The Second Coming of the Cosmic Christ

The first coming of the Cosmic Christ occurred at the Big Bang. The blueprint of the cosmos that is the Cosmic Christ emerged into manifest reality.



The First and Second Coming of Jesus

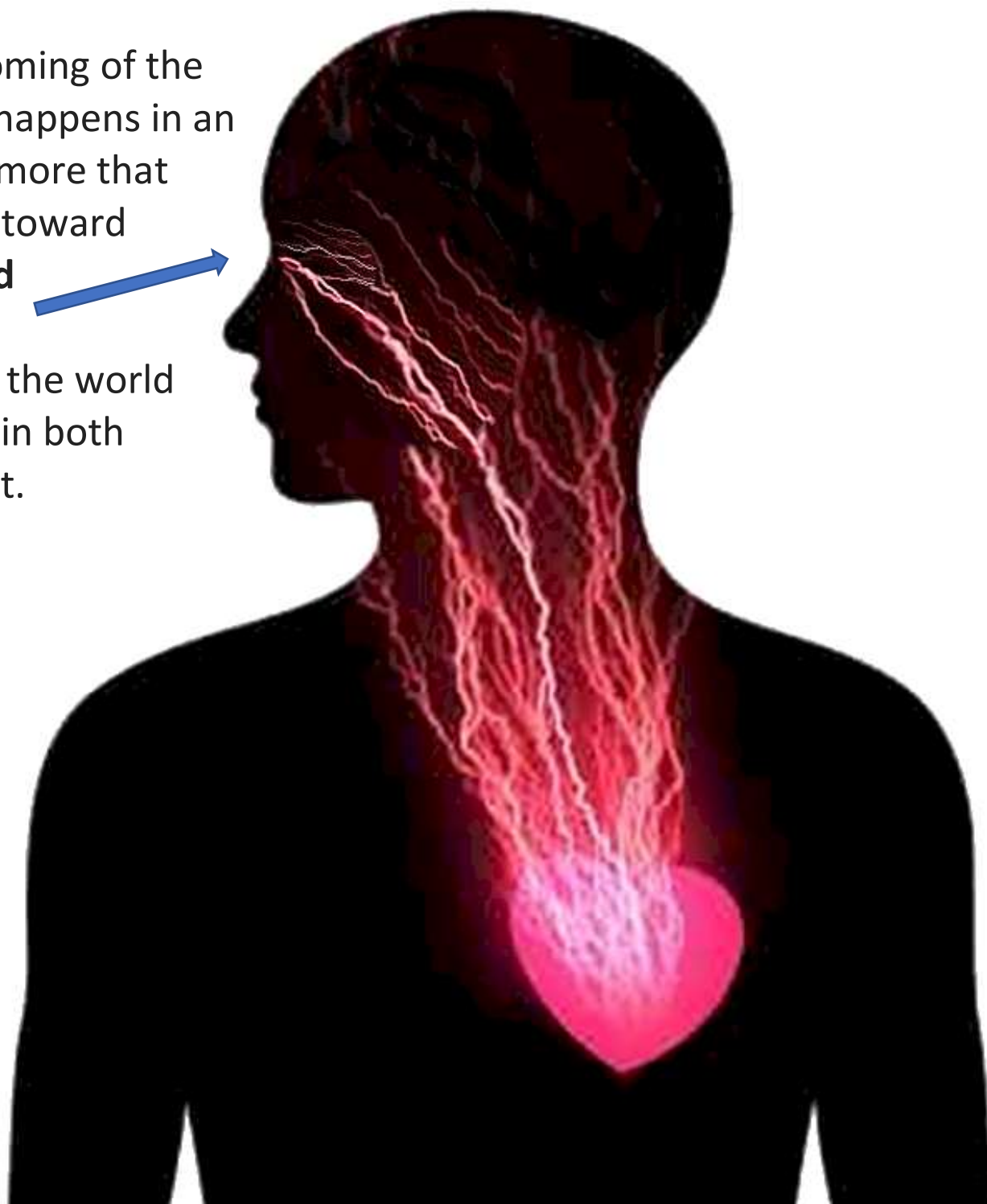
Then came Jesus, who was the personification and prototype of the Cosmic Christ in relatable, lovable, knowable, flesh and blood. **The second coming of Jesus occurs when anyone opens to love.** God is love. “Everyone who loves has been born of God” (1 John 4: 7).

The Second Coming of the Cosmic Christ

This is different from the second coming of Jesus. The more nondual, unitive consciousness inhabits humankind, the more the Cosmic Christ has returned and the more heaven and earth have become one. The second coming of Christ is the Christian way of speaking about Cosmic Christ as unity consciousness coming more and more into humankind's consciousness in spiritual evolution.

The Second Coming of the Cosmic Christ happens in an individual the more that person moves toward **heart-centered single-seeing**.

This is viewing the world from Oneness in both mind and heart.

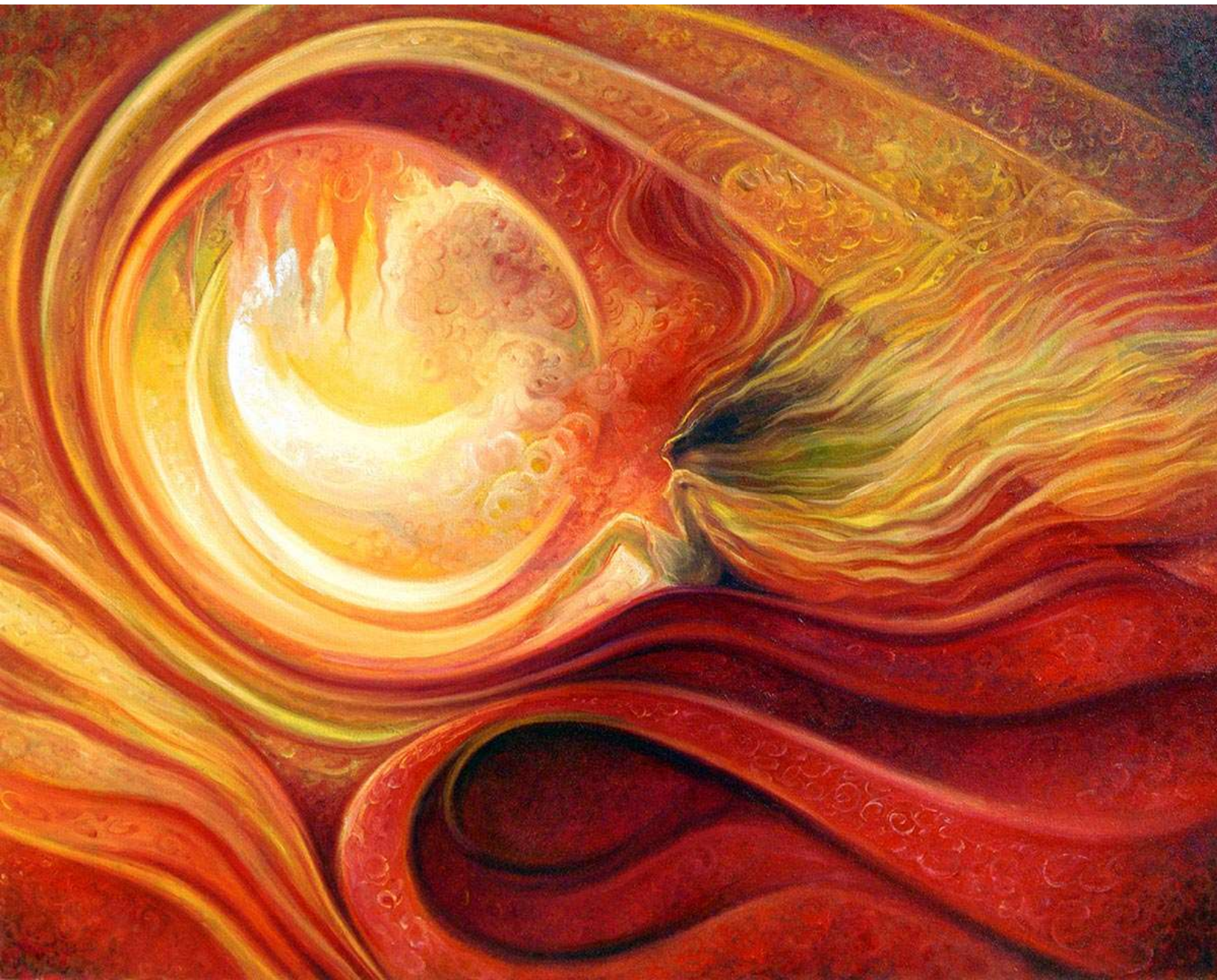




The Heart of Oneness spirals out to encompass the whole universe



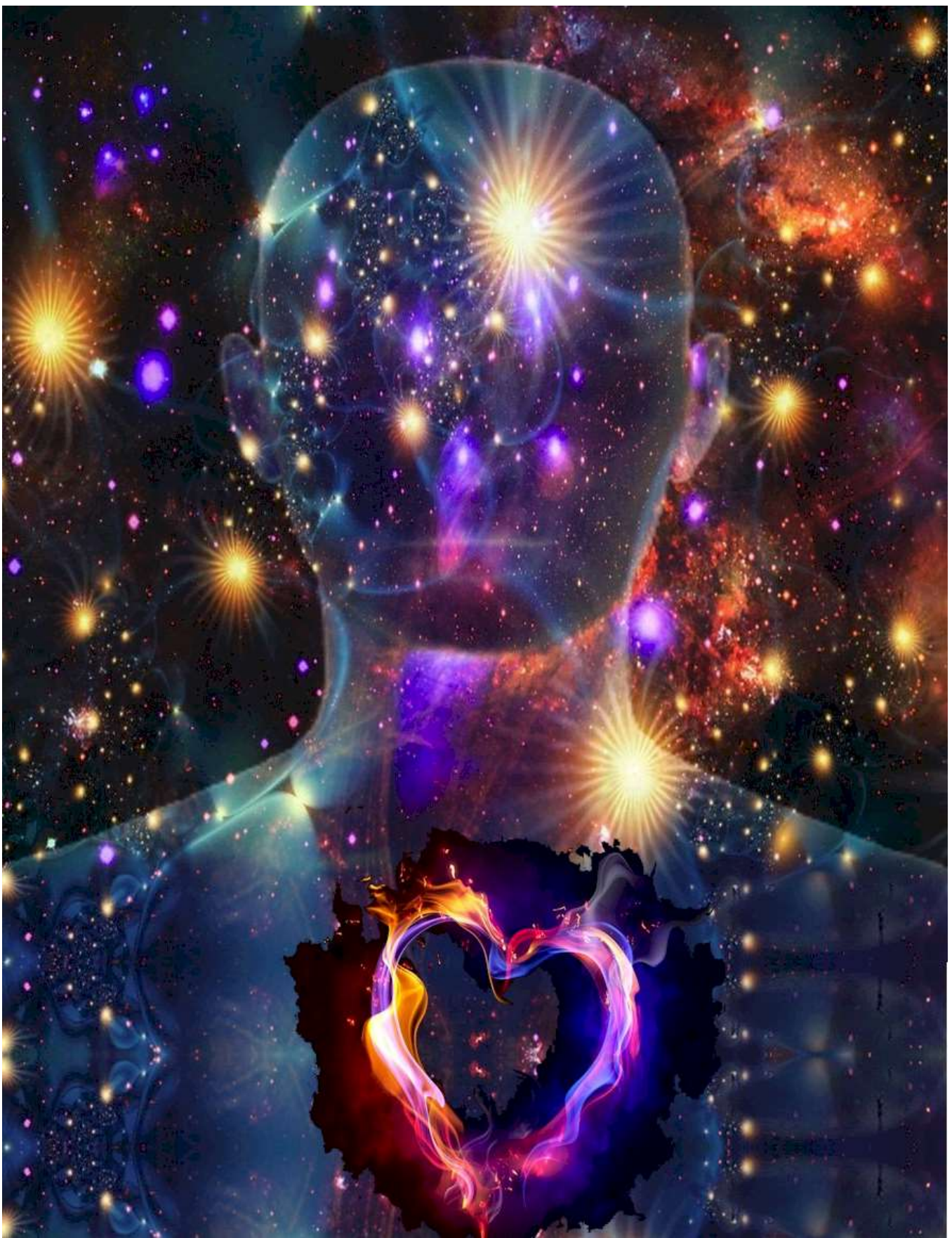
Any single-seeing movement toward removing what separates us increases compassion and love is a move towards the second coming of the Cosmic Christ. The first coming was in creation. The second coming will be the reuniting of creation, God, and human consciousness in the manifest world without division or separation.



Fire of Love Rassouli

rassoulie.com

The evolutionary process destroys as well as creates to further the process of the coming of the Oneness of the Cosmic Christ into the world



Oneness is a Cosmic Mind and a Passionate Heart that encompass the divine, human, and material reality in its loving embrace.



This is an authentic spiritual creation which did not exist before in our awareness and is increasingly manifest today as we each participate in our own evolution of consciousness. Every step of awakening that you and I take is a step toward the Second Coming of Christ into the world. Imagine that! The higher the consciousness the greater the degree of inclusion, unity, and the more the second coming of the Cosmic Christ becomes a reality.

The more hands forming this heart of love, the more the Cosmic Christ has come into the consciousness of the world.